

2-PRONG - SE96 Series



0.60 Inches
(16mm)

SE96-A 2.0mm	26 Dia.x.033=.86ct.	4.0	Gr. (2mm)
SE96-A 2.4mm	22 Dia.x.051=1.12 ct.	4.0	Gr. (2.4mm)
SE96-A 2.8mm	22 Dia.x.086=1.89 ct.	5.0	Gr. (2.8mm)
SE96-A 3.2mm	20 Dia.x.12=2.40 ct.	6.0	Gr. (3.2mm)



.90 Inches
(23.5mm)

SE96-B 2.0mm	44 Dia.x.033=1.45 ct.	5.8	Gr. (2mm)
SE96-B 2.4mm	38 Dia.x.051=1.94 ct.	5.8	Gr. (2.4mm)
SE96-B 2.8mm	34 Dia.x.086=2.92 ct.	6.7	Gr. (2.8mm)
SE96-B 3.2mm	30 Dia.x.12=3.60 ct.	8.0	Gr. (3.2mm)



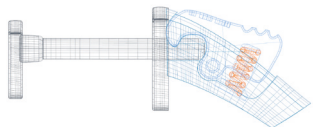
1.2 Inches
(30.5mm)

SE96-C 2.0mm	60 Dia.x.033=1.98 ct.	8.0	Gr. (2mm)
SE96-C 2.4mm	54 Dia.x.051=2.75 ct.	8.0	Gr. (2.4mm)
SE96-C 2.8mm	46 Dia.x.086=3.96 ct.	9.0	Gr. (2.8mm)
SE96-C 3.2mm	42 Dia.x.12=5.04 ct.	10.0	Gr. (3.2mm)



1.5 Inches
(37.8mm)

SE96-D 2.0mm	74 Dia.x.033=2.44 ct.	10.0	Gr. (2mm)
SE96-D 2.4mm	66 Dia.x.051=3.37 ct.	10.3	Gr. (2.4mm)
SE96-D 2.8mm	58 Dia.x.086=4.99 ct.	10.3	Gr. (2.8mm)
SE96-D 3.2mm	50 Dia.x.12=6.00 ct.	12.0	Gr. (3.2mm)



Push-Button Mechanism
Extra secure and easy to use



1.8 Inches
(45mm)

SE96-E 2.0mm	92 Dia.x.033=3.04 ct.	12.0	Gr. (2mm)
SE96-E 2.4mm	82 Dia.x.051=4.18 ct.	14.0	Gr. (2.4mm)
SE96-E 2.8mm	70 Dia.x.086=6.02 ct.	16.0	Gr. (2.8mm)
SE96-E 3.2mm	60 Dia.x.12=7.20 ct.	19.0	Gr. (3.2mm)